



Marine Plan Partnership (MaPP) Initiative

Contract Announcement (contract to be awarded only if funding is secured)

Integrated Kelp State-of-Knowledge Report for the Northern Shelf Bioregion

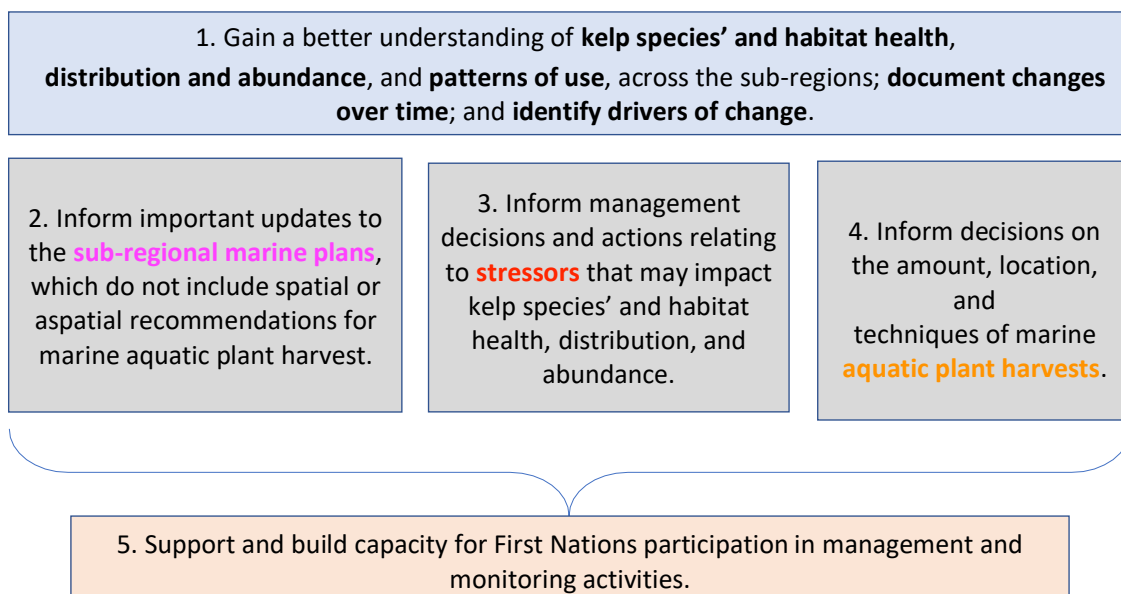
The MaPP initiative seeks to contract a consultant to develop an integrated kelp state-of-knowledge report to: a) help answer our four project questions; b) provide annual snapshots of the current state-of-kelp in the region and the four MaPP sub-regions; and c) inform the development of future monitoring in line with knowledge gaps and a monitoring strategy that incorporates local and links regional management priority actions across four sub-regions.

Overview

The Marine Plan Partnership for the North Pacific Coast (MaPP) is a unique collaboration that resulted in the development and implementation of marine plans. By bringing together 17 First Nations and the Government of B.C. under a collaborative governance structure, the MaPP Partners developed a groundbreaking 'blueprint' for sustainable ocean use across four sub-regions: North Vancouver Island (NVI), Central Coast (CC), North Coast (NC), and Haida Gwaii (HG) (collectively 'the MaPP Region').

Monitoring of multiple ecosystem components, including kelp, is integral to MaPP's ecosystem-based management (EBM) approach to marine planning and stewardship. Because of the immense cultural, economic, and ecological significance of kelp on our coast, kelp species were among the first indicators considered to help pilot MaPP's regional ecosystem-based management monitoring system.

The overarching goals of the Regional Kelp Monitoring Program (RKMP) are as follows:





6. Demonstrate the utility of a coordinated regional monitoring approach to help secure future funding resources for further regional monitoring programs.

The key questions we are working on answering under the RKMP fall under the themes of inventory/baseline, change, drivers, and ecological implications:

Inventory/baseline	What do we have?	What is the current spatial extent, biomass, and condition of bull and giant kelp?
Change	How is it doing?	How is this changing over time and does this vary across the region? Which kelp beds are more persistent?
Drivers	If changing, why?	What factors are driving these changes? (e.g., harvest, oceanographic variables (temperature, salinity), sea otters (occupation), proximity to development)
Ecological Implications	What else is affected?	How are kelp-associated fish and invertebrate species affected by changes in kelp spatial extent, biomass, and condition?

As monitoring data (in situ and remotely sensed imagery) from the broader regional kelp monitoring program accumulates and parallel research on kelp is underway in the region, MaPP Partners are seeking an integrated state-of-knowledge assessment to address our research questions, inform long-term kelp monitoring strategies in the region and to support management priorities at the sub-regional level. This report, coupled with the existing MaPP kelp conceptual model and roadmap, will provide the evidence and recommendations required to develop a responsive, long-term monitoring program.

Scope of Work

Working together with processed data provided by MaPP Partners and publicly-accessible data from other research in the region, the contractor will provide a state of knowledge report for canopy kelp in the region (bull kelp and giant kelp). This would additionally yield a report card of regional and sub-regional status and trends to 2024, identify what is known and remains unknown about kelp (what we have, how it’s doing, if it’s changing, why, and what else is affected) and provide a template for each Nation, sub-region and the MaPP region to produce annual snapshots for future years. The report will be shared at a regional workshop in March 2025 and, together with the existing conceptual model and roadmap, will provide a foundation for the subsequent co-development of an integrated regional kelp monitoring strategy in collaboration with MaPP Partners, the MPA Network and invited experts.

The scope of work includes convening a small working group; conducting literature/project review of relevant kelp monitoring initiatives in the NSB, including sub-regional work and regional reports; discussions with selected experts; meetings with sub-regional kelp monitoring stewardship and technical staff; presentation to MaPP Partners of the draft report; production of the regional and sub-regional



snapshots/report cards up to 2024; public-facing templates for the region as well as each sub-region to document their annual snapshots going forward; and presentation of the final report and recommendations at the March 2025 regional workshop.

Deliverables

1. Summary document of literature/project review, expert meetings, working group meetings and sub-regional meetings held to inform the first draft of the integrated state-of-knowledge report.
2. Workshop summary report.
3. Regional and four sub-regional report cards of the current state-of-kelp, linked to kelp's historical context in the NSB where available.
4. Final version of the Integrated Kelp State-of-Knowledge Report for the Northern Shelf Bioregion.

Contract Timeline and Milestones

Subject to change depending on start date and funding.

Week of 11 November: Working group meeting and Literature/Project Review

- **By 18 November:** First Working Group meeting

Week of 18 November: Expert Meetings with subregional technical staff, stewards, other identified experts

- **By 29 November:** Completed meetings with experts from the four subregions and identified experts

Weeks of 2 December to 31 January – Analysis

- **By 17 January:** Completion of any additional or rescheduled meetings
- **By 31 January:** Development of a draft report and 2024 report cards

Weeks of 3 Feb to 28 Feb – Feedback and Revisions

- **By 7 February:** Second working group meeting
- **By 28 February:** Complete revisions based on working group feedback

Week of 3 March – Presentation of Report and report cards to MaPP Partners

- **By 7 March:** Presentation to MaPP Partners completed

Weeks of 10 March to 31 March – Workshop Presentation and Final Documentation

- **By 14 March:** Present findings of report to MaPP workshop
- **By 28 March:** Summary report of workshop recommendations/outcomes
- **By 31 March:** Summary reports/report cards/recordings/final documentation uploaded onto MaPP Dropbox

Ongoing – biweekly check-in with regional projects coordinator to review status and progress against deliverables.



Contract Remuneration

- Up to a contract maximum of \$50,000 plus GST; travel costs for approved meetings in accordance with MaPP travel expense guidelines

MaPP input

MaPP will provide the consultant with:

- A copy of the Regional Action Framework and Kelp Regional Workshop Reports.
- Annual regional kelp monitoring reports and sub-regional reports where available.
- MaPP kelp conceptual model and roadmap.
- Access to processed data (under strict confidentiality arrangements and with the approval of all MaPP Partners).
- Sub-regional Marine Plans.
- Names and introductions to sub-regional contacts and suggested expert advisors.
- Coordination support for meetings and workshops.
- Centralized repository for all documentation collected and produced under this contract.
- Reporting and recording support at the March 2025 workshop.

Qualifications, Experience and Skills

- In depth understanding of MaPP Partner regional and sub-regional kelp monitoring priorities as identified in the MaPP kelp conceptual model and roadmap.
- Knowledge of kelp ecology, ecosystem-based management kelp monitoring, and associated biotic and abiotic indicators of kelp dynamics.
- Documented experience facilitating (online and in-person) meetings with First Nations, the Provincial government, academia and others on related natural resource issues in the MaPP region, with the ability to elicit and understand the interests, views and opinions of all meeting participants within approved agendas and timelines
- Flexible availability throughout the contract term to accommodate up to four 2-3-hour virtual meetings and to accommodate weekly check-in meetings.
- General familiarity with the MaPP process and sub-regional marine plans and Regional Action Framework (RAF) considered a strong asset.
- Ability to remain neutral and objective while guiding discussion of presented or pre-circulated material to obtain views and perspectives of all meeting participants and address goals and objectives of the integrated kelp state-of-knowledge report.

Contracting Timeline

November 2024-March 2025. Contracting timeline **dependent on funding**, start date and availability of MaPP Partners for meetings.



To Apply

Please submit a cover letter that outlines how you meet the qualifications, a resume or Curriculum Vitae, that demonstrates the qualifications noted above, and daily and hourly rate for services no later than 5pm on November 8, 2024 to:

Integrated Kelp State-of-Knowledge report
c/o Philip Akins and Jen Temple
E-mail: pakins@mappocean.org; jtemple@mappocean.org

Coast Conservation Endowment Fund Foundation (Coast Funds) is supporting the MaPP partners by, among other activities, administering funds on behalf of MaPP for implementation activities.